

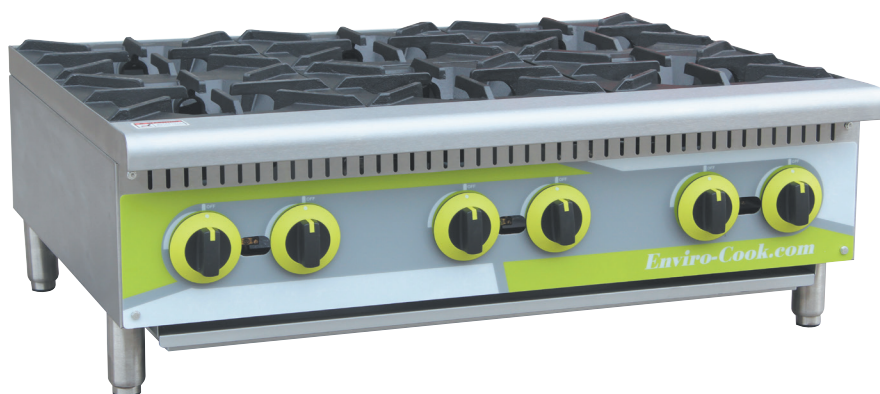
### MEDIUM DUTY HOT PLATES



Enviro-HP-24



Enviro-HP-36



Enviro-HP-48

#### FEATURES:

- Heavy duty cast iron burners and cooking grate
- Stainless and aluminized steel, fully welded construction to eliminate grease and dirt accumulation
- Individual control settings for each burner for versatility
- 4" heavy duty chrome legs
- Drip resistant burners allow for faster heating and even heat distribution
- Natural gas units come equipped with propane conversion kits
- Each burner has an independent control knob with visible on/off indicator
- Cool touch bull-nose design to protect from burns
- Full width stainless steel drip pan try
- Angled slope hotplates keep grease away from burners and pilot lights
- Front access for light of pilot lights
- 1 Year Parts and Labor Warranty



#### MEDIUM DUTY HOT PLATES

| MODEL        | BURNERS | GAS INLET SIZE      | BTU/<br>BURNER | TOTAL<br>BTU/HR | W.C.<br>(NG) | W.C.<br>(LP) | SIZE            | SHIPPING SIZE     | NW<br>(LBS.) | GW<br>(LBS.) |
|--------------|---------|---------------------|----------------|-----------------|--------------|--------------|-----------------|-------------------|--------------|--------------|
| Enviro-HP-24 | 2       | 3/4" NPT connection | 25,000         | 50,000          | 5"           | 10"          | 12" x 28" x 13" | 16.5" x 34" x 17" | 60           | 84           |
| Enviro-HP-36 | 4       | 3/4" NPT connection | 25,000         | 100,000         | 5"           | 10"          | 24" x 28" x 13" | 28" x 34" x 17"   | 115          | 152          |
| Enviro-HP-48 | 6       | 3/4" NPT connection | 25,000         | 150,000         | 5"           | 10"          | 36" x 28" x 13" | 48" x 34" x 17"   | 181          | 220          |

In the pursuit of a better product, durability and performance. ENVIRO-COOK reserves the right to change specifications, materials and design without further notice.